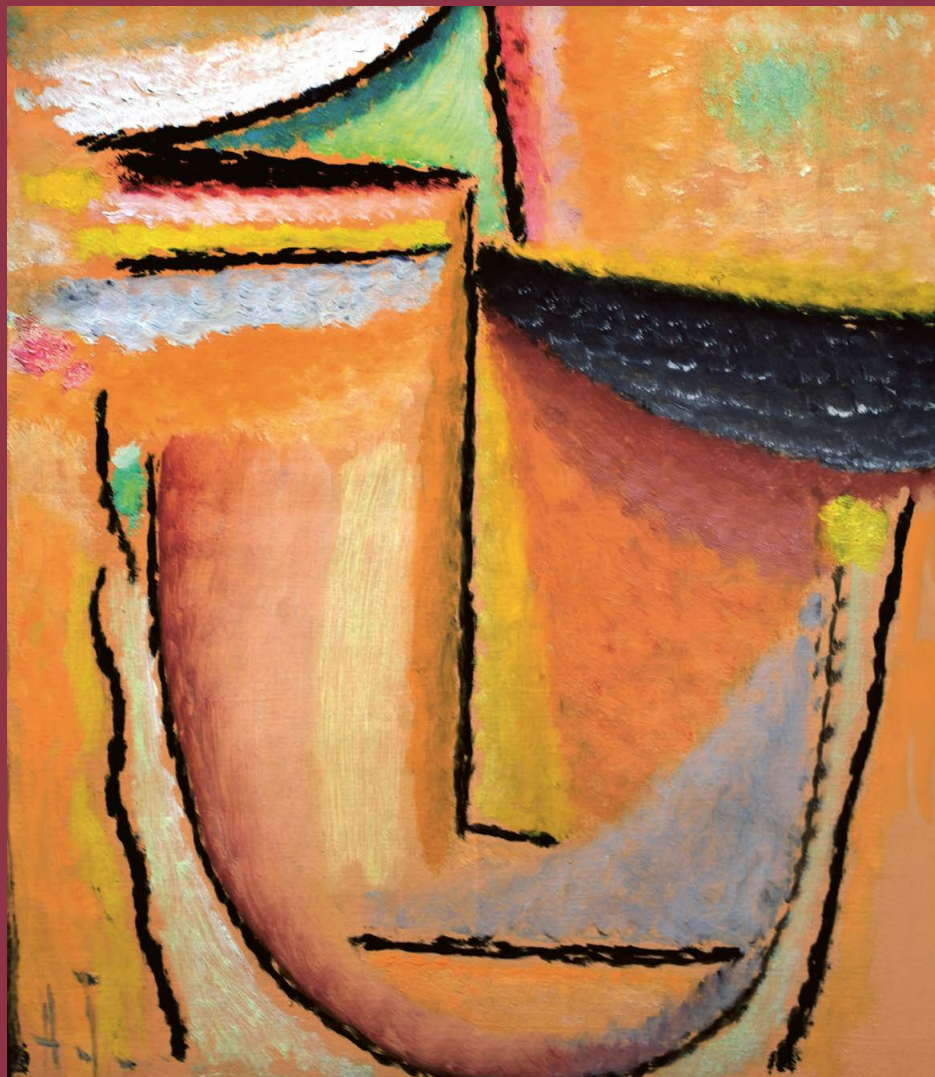




# Extending the Art of Healing Etheric Forces as Forces for the Future



9–14 Sept. 2025 at the Goetheanum  
International Annual Conference  
of the Medical Section

“We do not learn spiritual science in order to get satisfaction for ourselves, not for the sake of our own satisfaction, but so that we get mild, blessing hands, the mild look which already has an effect just by shining from our eyes ...”

“The Christ impulse in historical development”,  
lecture of 19 September 1911, GA 130

### 3 Welcome

### 4 Programme

### 6 Specialist conferences

- 6 Medicine and Pharmacy
- 8 Naturopathy (ISAN)
- 10 Eurythmy Therapy
- 12 Body Therapies
- 14 Anthroposophic Psychotherapy
- 16 Dentistry

### 18 Artistic and meditative prelude

### 19 School of Spiritual Science work

### 20 Workshops

#### Multiprofessional conference

- 20 Observation, diagnosis and therapy of the etheric
- 26 Experiencing art, music, movement, pharmacy, the garden and research

### 30 Scientific poster presentation

### 31 Registration for conference

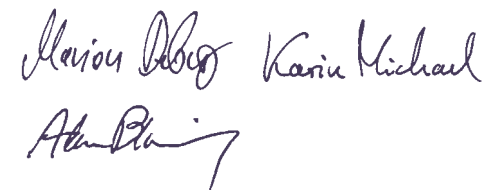
“It is of the greatest importance to know that ordinary human powers of thought are refined powers of configuration and growth. A spiritual principle reveals itself in the configuration and growth of the human organism. And as life progresses this principle emerges as the spiritual power of thought.”

From *Extending Practical Medicine*  
by Rudolf Steiner und Ita Wegman

Dear Colleagues,

Right up to the last days of his life, Rudolf Steiner worked with Ita Wegman on the completion of the book *Extending Practical Medicine*. Therapeutic working groups around the world study this book with great intensity. With ground-breaking new perspectives on medicine and in particular the descriptions of the human life organisation, the etheric body, the contents give us a new foundation for a system

of medicine of the future that wishes to support healing powers in such a way that they can also become forces of the future for people and their development. No other modern medical system describes the forces and effects in our organism in such a differentiated way. This year's annual conference is dedicated to a deeper understanding and further development of this medical system.



For the Section Leaders and the IKAM Council  
Marion Debus, Karin Michael and Adam Blanning

#### Literature for preparation:

Rudolf Steiner, Ita Wegman: *Extending Practical Medicine* (which has also published in English with the title *Fundamentals of Therapy*)

Tuesday, 9 September	Wednesday, 10 September	Thursday, 11 September	Friday, 12 September	Saturday, 13 September	Sunday, 14 September
	<b>08.15</b> Artistic and meditative prelude	<b>08.15</b> Artistic and meditative prelude	<b>08.15</b> Artistic and meditative prelude	<b>08.15</b> Artistic and meditative prelude	<b>08.15</b> Artistic and meditative prelude
	<b>09.15</b> Specialist conferences	<b>09.15</b> Specialist conferences	<b>09.15</b> What does the renewal of the mysteries mean from the perspective of nursing? Where and how does Christ work? <i>Tania Prince, Rolf Heine</i>	<b>09.15</b> The human etheric between molecular biology and cosmic forces <i>Matthew Mirkin, James Dyson</i>	<b>09.15</b> 'What is more refreshing than light? Conversation!' Exercises for exchange and mutual nourishment <i>Moderator Adam Blanning</i>
	<b>10.30</b> Coffee break	<b>10.30</b> Coffee break	<b>10.30</b> Coffee break	<b>10.30</b> Coffee break	<b>10.30</b> Coffee break
	<b>11.15</b> Specialist conferences	<b>School of Spiritual Science work</b>  <b>11.15</b> School of Spiritual Science work, class lessons and workshops  <b>Multiprofessional conference</b>	<b>11.15</b> Workshops on the observation, diagnosis and therapy of the etheric	<b>11.15</b> Workshops on the observation, diagnosis and therapy of the etheric	<b>11.15</b> The task of anthroposophic medicine in the 21st century <i>Marion Debus</i> <b>The Foundation Stone in eurythmy</b> <i>Goetheanum Eurythmy Ensemble</i>
<b>Specialist conferences</b>	<b>12.30</b> Lunch	<b>12.30</b> Lunch	<b>12.30</b> Lunch	<b>12.30</b> Lunch	<b>12.45</b> End
<b>15.00</b> Welcome <i>Adam Blanning, Marion Debus, Karin Michael</i> <b>Signatures of a great medicinal product and the dual nature of the etheric body</b> <i>Karin Michael, Vesna Forštnerič Lesjak</i>	<b>15.00</b> Specialist conferences	<b>15.00</b> Welcome <i>Adam Blanning, Marion Debus, Karin Michael</i> <b>Fundamentals – foundation of a Christian science of substances and medicine</b> <i>Michaela Glöckler</i>	<b>15.00</b> Workshops to experience art, music, movement, pharmacy, the garden and research	<b>15.00</b> Workshops to experience art, music, movement, pharmacy, the garden and research	
<b>16.15</b> Coffee break	<b>16.15</b> Coffee break	<b>16.15</b> Coffee break	<b>16.15</b> Coffee break	<b>16.15</b> Coffee break	
<b>17.00</b> Specialist conferences	<b>17.00</b> Specialist conferences	<b>17.00</b> Workshops on the observation, diagnosis and therapy of the etheric	<b>17.00</b> In between – fruits of anthroposophic nursing in the midst of the medical movement <i>Michaela Schnur, Christoph von Dach</i>	<b>17.00</b> World Community	
<b>18.30</b> Evening meal	<b>18.30</b> Evening meal	<b>18.30</b> Evening meal	<b>18.30</b> Evening meal	<b>18.30</b> Evening meal	
<b>19.30</b> Specialist conferences	<b>19.30</b> I breathe the force of life – reflections and exercises on the life ether <i>Esther Böttcher, Johannes Weinzirol</i> <b>Conclusion with eurythmy</b>	<b>19.30</b> Why we need strengthened force of thought for the future? <i>Adam Blanning</i> <b>Conclusion with eurythmy</b>	<b>19.30</b> 100 years after Rudolf Steiner's death <i>Peter Selg</i> <b>Commemoration of the dead</b> <i>Marion Debus</i> <b>Conclusion with eurythmy</b>	<b>19.30</b> Eurythmy 'Werde Welten' <i>Goetheanum Eurythmy Ensemble</i>  <b>From 20.45</b> Artistic and festive evening	

How can the substance and pharmaceutical process be used to influence the etheric forces in chronic fatigue and long Covid?

Conference languages  
DE/EN/IT

The starting point for this year's Medicine and Pharmacy specialist conference is the fundamental and at the same time puzzling description in Chapter XIX of our centenary book *Extending Practical Medicine*. Here the 'process of falling ill and recovery' is described 'as a single circular process'. The specific pathological processes caused by the respective disease in the organism must actively return to a regulated interaction of the constitutional elements in the healing process, which is always connected with addressing the etheric forces. Typical medicines must therefore be composed in such a way that they support the life forces in the healing process in a differentiated way. Against this background, how can natural substances and corresponding pharmaceutical processes be used to influence the etheric body?

In medical contributions, we intend to address the various forms of fatigue and exhaustion as pervasive phenomena of etheric insult with a special focus on long Covid, whereby a patient presentation from Klinik Arlesheim will accompany us through the conference.

For a better understanding of the medicinal products, we will present basic, especially rhythmic pharmaceutical processes and deepen this through perception exercises. The pharmaceutical and medical differentiation of the medicines discussed as examples will lead this extended knowledge into daily practice.

We look forward to a lively discussion!  
Marion Debus, Annette Greco,  
Mónica Mennet-von Eiff, Friederike Tews

## Tuesday, 9 September

**15.00** Joint start of the conferences  
**Welcome**  
**Signatures of a great medicinal plant and the dual nature of the etheric body**  
*Karin Michael,  
Vesna Forštnerič Lesjak*  
**16.15** Break  
**17.00** Conference topic in practice Patient presentation (45 min)  
**Working out the need for healing** (30 min.)  
**Plenum and discussion**  
*Klinik / Akademie Arlesheim,  
Coordination: Johannes Weinzirl*  
**18.30** Evening break  
**19.30** The riddle of chronic fatigue – 12 approaches to therapy  
*Jan Mergelsberg*

## Wednesday, 10 September

**08.15** Artistic and meditative prelude  
**09.15** What can anthroposophical medicinal therapy achieve in the healing process?  
*Georg Soldner*  
**Perception and tasting Part 1** (30 min)  
*Mónica Mennet-von Eiff*  
**10.30** Break  
**11.15** Rhythm as a driver of pharmaceutical processes  
*René Schwarz*  
**Perception and tasting Part 2** (20 min)  
*Mónica Mennet-von Eiff*  
**12.30** Lunch break  
**15.00** Differentiated medicinal therapy to strengthen the etheric in chronic fatigue and long Covid  
*Matthias Sauer*  
*Pharmacists: Annette Greco,  
Friederike Tews*  
**Perception and tasting Part 3** (20 min)  
*Mónica Mennet-von Eiff*  
**16.15** Break  
**17.00** Patient presentation, therapeutic discussion, Need for healing and therapy  
*Klinik / Akademie Arlesheim,  
Coordination: Johannes Weinzirl*  
**Solution of tasting** (15 min)  
*Mónica Mennet-von Eiff*  
**18.30** Evening break  
**19.30** I breathe the force of life – reflections and exercises on the life ether  
*Esther Böttcher, Johannes Weinzirl*  
**Conclusion with eurythmy**

## Thursday, 11 September

**08.15** Artistic and meditative prelude  
**9.15** Therapeutic colloquium on differential therapy for long Covid and fatigue states  
*Moderator: Friederike Tews,  
Henrik Szőke*  
**10.30** Break

Anthroposophic naturopathy as  
a multimodal therapy concept

Conference language  
DE

A century ago, Rudolf Steiner and Ita Wegman published the work *Extending Practical Medicine. Fundamental Principles Based on the Science of the Spirit*, which laid the foundation for anthroposophic medicine. As part of the joint work on Chapters II ‘Why do people fall ill?’ and XIV ‘The therapeutic way of thinking’, a pool of knowledge is to be created for colleagues to exchange best practices and innovative approaches in dialogue.

The focus here is on the therapist’s perceptual ability in personal contact with the patient. For naturopaths, this makes it necessary to combine conventional medical knowledge with typical naturopathic procedures and individualised healing methods and to understand these from a spiritual-scientific perspective.

Naturopathy is deeply rooted in many countries and recognised as a cultural asset; it falls under the fundamental right to freedom of thought. Many patients regard treatment by naturopaths as an important complement to medical therapy. They value the holistic ap-

proach, alternative healing methods and traditional knowledge. Many therapies practised by naturopaths are rarely carried out by physicians. Examples include osteopathy, eurythmy therapy, Goodheart kinesiology, colon hydrotherapy, the new yoga method developed by Grill, reflexology, creative therapies and spagyric medicine.

The specialist conference will focus on ‘Anthroposophic naturopathy as a multimodal therapy concept’. The subject of our research is various therapeutic procedures and methods that are inspired by anthroposophical spiritual science in our healing practices.

Anthroposophic naturopathy therefore represents a comprehensive concept that goes far beyond the limits of knowledge that can be acquired externally. It constitutes a continuous path of development that enables naturopaths to penetrate their individual healing methods and the entire spectrum of their practice from a spiritual-scientific perspective.

This understanding promotes a holistic view of human health and wellbeing.

Tuesday, 9 September

**15.00** Joint start of the conferences  
**Welcome**  
**Signatures of a great medicinal plant and the dual nature of the etheric body**  
*Karin Michael, Vesna Forštnerič Lesjak*  
**16.15** Coffee break  
**17.00** Reading of the weekly verse. Brief introduction to the topic. Work on Chapter II ‘Why do people fall ill?’ (CW 27)  
**18.30** Evening meal  
**19.30** Physical and mental illnesses in naturopathy – keynote presentation and discussion round

Wednesday, 10 September

**08.15** Artistic and meditative prelude  
**09.15** Short meditative prelude  
**Text work on Chapter XIV ‘The therapeutic way of thinking’ – (CW 27)**  
**10.30** Coffee break  
**11.15** The perceptual ability of the therapist in personal contact with the patient  
**12.30** Lunch  
**15.00** Anthroposophic naturopathy as a multimodal therapy concept  
**16.15** Coffee break  
**17.00** Treatment by naturopaths as an important complement to medical therapy  
**18.30** Evening meal  
**19.30** I breathe the force of life – reflections and exercises on the life ether  
*Esther Böttcher, Johannes Weinzirl*  
**Conclusion with eurythmy**

Thursday, 11 September

**08.15** Artistic and meditative prelude  
**09.15** Short meditative prelude  
**The development path of anthroposophic naturopaths – on professional esotericism**  
**10.30** Coffee break

## Life forces now!

Conference languages  
DE / EN

The life forces / etheric forces are the topic of this year's international eurythmy therapy specialist conference. How did Ita Wegman and Rudolf Steiner view the importance of the life forces 100 years ago, and what do we experience today? Are life forces and etheric forces the same thing?

A hundred years ago, Ita Wegman and Rudolf Steiner published *Extending Practical Medicine*. Ingrid Hermansen will give us an introduction to Chapter 18. In his lecture, Matthias Girke portrays how Ita Wegman and Rudolf Steiner describe the etheric there.

This year too, in addition to moving together, the focus will be on the practical experiences of

colleagues around the world and the joint discussion of these. In the workshops we will look at different aspects of the life forces: our sources of life forces, the perception of healthy life forces, the life forces in the development of the child, and the life forces that we encounter in the therapy room.

We look forward to meeting you and hearing about your many different experiences!  
Warm regards from the preparation team  
Hana Adamcová, Tiffany Russey, Gudrun Haller, Karolína Svobodová, Ingrid Hermansen and Katharina Gerlach

## Tuesday, 9 September

**15.00** Joint start of the conferences  
Welcome  
Signatures of a great medicinal plant and the dual nature of the etheric body  
*Karin Michael, Vesna Forštnerič Lesjak*  
**16.15** Coffee break  
**17.00** Introduction to Chapter 18 of *Extending Practical Medicine*  
*Ingrid Hermansen*  
**18.30** Evening meal  
**19.30** Plenum / small groups  
Our sources of life forces – exchange views

## Wednesday, 10 September

**08.15** Artistic and meditative prelude  
**09.15** Health workshop: Perception exercises on the etheric  
**11.15** Development workshop: Rhythms and vowels  
**15.00** The etheric in *Extending Practical Medicine* and practical examples from eurythmy therapy  
*Matthias Girke*  
**16.15** Coffee break  
**17.00** Illness workshop: Healing and consonants  
**18.30** Evening meal  
**19.30** I breathe the force of life – reflections and exercises on the life ether  
*Esther Böttcher, Johannes Weinzirl*  
Conclusion with eurythmy

## Thursday, 11 September

**08.15** Artistic and meditative prelude  
**09.15** Conclusion / plenum  
Review and look ahead

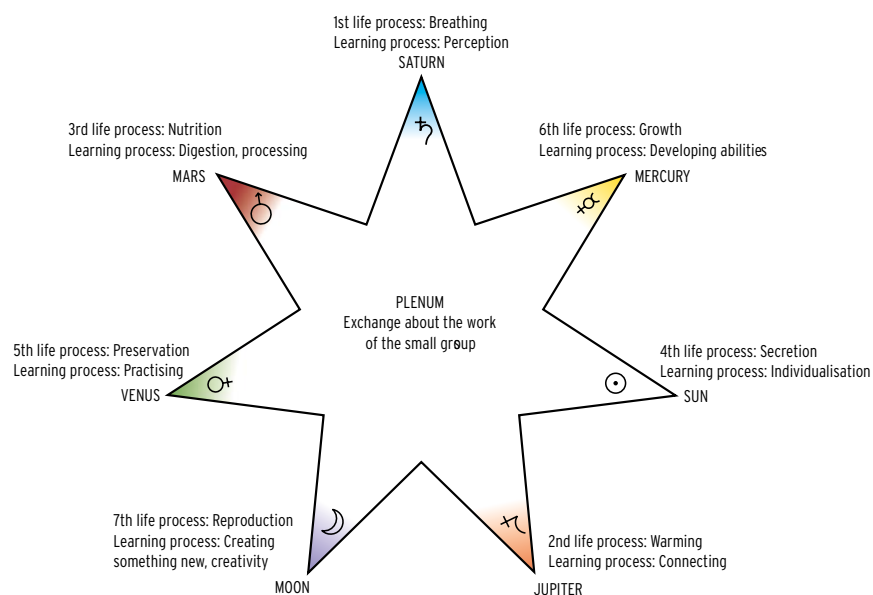


## How do we stimulate the etheric forces of the liver? Treatment concepts from body therapies

Conference languages  
DE/EN/NL

*'The liver always mediates the translation of the intended ideas into the actions carried out by the limbs.'*

Rudolf Steiner



We dedicate each unit to one of the seven life processes\* in relation to the liver, its function, possible abnormalities and diseases.

In an interprofessional exchange between the many methods of anthroposophic body therapies, we want to work out in joint discussion and practical exchange what therapeutic contribution body therapies can make to strengthening physiological processes in the liver, alleviating symptoms and treating diseases.

Organisation and moderators: Elma Pressel, Cindy Verheul, Almut Karges, Almuth Steyer

\* Literature:

Coenraad van Houten, Sophie Pannitschka:  
*Erwachsenenbildung als Willenserweckung. Methodik und Didaktik erwachsenengerechten Lernens*, Stuttgart 2018.

Additional and up-to-date information at  
[www.iaabt-medsektion.net](http://www.iaabt-medsektion.net)

### Tuesday, 9 September

**15.00** Joint start of the conferences  
**Welcome**  
**Signatures of a great medicinal plant and the dual nature of the etheric body**  
*Karin Michael, Vesna Forštnerič Lesjak*  
**16.15** Coffee break  
**17.00** Etheric forces of the liver  
**1st life process: Respiration, perception**  
**18.30** Evening meal  
**19.30** Etheric forces of the liver  
**2nd life process: Warming, connecting**

### Wednesday, 10 September

**08.15** Artistic and meditative prelude  
**09.15** Etheric forces of the liver  
**3rd life process: Nutrition, digestion**  
**10.30** Coffee break  
**11.15** Etheric forces of the liver  
**4th life process: Secretion, encapsulation**  
**12.30** Lunch  
**15.00** Etheric forces of the liver  
**5th life process: Preservation**  
**16.15** Coffee break  
**17.00** Etheric forces of the liver  
**6th life process: Growth**  
**18.30** Evening meal  
**19.30** I breathe the force of life - reflections and exercises on the life ether  
*Esther Böttcher, Johannes Weinzirol*  
**Conclusion with eurythmy**

### Thursday, 11 September

**08.15** Artistic and meditative prelude  
**09.15** Etheric forces of the liver  
**7th life process: Reproduction**  
**10.30** Coffee break

## Psychotherapeutic healing pathways in the context of the decline of human etheric forces

Conference languages  
EN/RU/UA/ES/IT/DE

The present time confronts psychotherapists with continuously increasing numbers of patients in need of therapy for all types of mental disorders. In adulthood worldwide the rise of burn-out syndromes is striking, whereas in childhood in particular restlessness-syndromes, social-behaviour disorders and concentration disorders status in the centre. At the same time we find children even at young age exhausted, showing deteriorated immunity, missing zest for life, and a craving for distraction in the passive virtual worlds.

This Psychotherapy specialist conference is dedicated to a broad cause-and-effect investigation, which leads us to the weakened human constitution as origin for decreased resilience and susceptibility for mental illness.

We aim to shed light on interdisciplinary treatment options that were developed from the anthroposophical understanding of the human being and will necessarily have to be developed in the future.

On behalf of the executive board of the International Federation of Anthroposophical Psychotherapy Associations we are looking forward to your participation - Vasuprada Kartic Godavarthy / India, Giovanna Bettini / Italy, Henriette Dekkers-Appel / Netherlands, Hartmut Horn / Germany

The conference will be run in hybrid format, the language is English. Translations into Spanish, Italian, Russian, Ukrainian, and German will be provided. Online participants will receive a link to their respective language channel some days before the conference. Registration for online participation is done via the national psychotherapy associations. Please write to the responsible country coordinator for your region: Argentina: Natalia Gonzales (natidevoto@gmail.com), Brazil: Patricia Botelho (patbotelho7@gmail.com), Canada & US: Zheni Nasi (zheni@netsolutionstime.com), Chile, Colombia, Mexico, Peru, Uruguay: Álvaro G. Olascuaga (alvaro.g.olascuaga@gmail.com), Germany: Hartmut Horn (hartmut-horn@praxis-dr-horn.de), India & South-East Asia: Vasuprada Kartic (vasuprada.kartic@gmail.com), Israel: Hanan Goldman (hanandr@walla.com), Italy: Giovanna Bettini (giovannabettini@yahoo.it), Netherlands & Belgium: Henriette Dekkers (dekkers.appel@planet.nl), Russia: Katja Shlyakhter (kamedoc@gmail.com), Spain: Miguel Falero (miguelfalero1@gmail.com), Switzerland: Klaus Herbig (info@herbig.ch), Ukraine: Narine (nairi2011@ukr.net), United Kingdom: John Lees (fjohnlees@aol.com).

Registration for in-person participation via online registration at the Goetheanum only. To listen in one of the other languages, you will need a mobile phone with the Zoom app and headphones.

### Tuesday, 9 September

**15.00 Joint Start of the Conferences Welcome**  
**Signatures of a great medicinal plant and the dual nature of the etheric body**  
*Karin Michael, Vesna Forštnerič Lesjak*  
**16.15 Coffee break**  
**16.45 Ceremonial beginning Specialist (hybrid) conference Anthroposophic Psychotherapy**  
**Phenomena in adult populations in modern times – the rise of the global disease of burn-out mounting to depression**  
**Case presentations framing in the modern cultures**  
*Henriette Dekkers*  
**18.30 Evening meal**  
**Phenomena in today's populations in periods of: Pregnancy**  
**Early childhood – epigenetic influences**  
**Are childhood illnesses induced by the phenomena of proper incarnation**  
*Hartmut Horn, Angelika Maaser; Illustrated by Clinical Cases*

### Wednesday, 10 September

**08.15 Meditative-artistic introduction: Sanskrit-singing on the four elements**  
*Vasuprada Kartic*  
**09.15 Diagnosis of the depleted etheric body – diagnosis according to ICD10 and DSM V**  
**Phenomena re. depletion of etheric forces, neurosis and psychosis**  
*Kan-anek Kaewthaweesab*  
**Depletion of etheric forces in the USA Childhood – ODD, AD(H)D, adjustment conduct disorders, anxiety, depression, substance abuse**  
*Tonya Stoddart*  
**10.30 Coffee break**  
**11.15 Gratitude round of global contributions – 100 yrs. Rudolf Steiner's contributions to Anthroposophical Psychotherapy & Psychiatry. Healing forces for the etheric body through psychotherapeutic approaches – the inner path**  
*Johannes Reiner, Vasuprada Godavarthy Kartic, Álvaro González, Zheni Nasi*  
**12.30 Lunch break**  
**Gratitude for 100 Years Rudolf Steiner**  
**The impact of the class lessons on the healing forces of the etheric body in psychotherapeutic practice**  
*Giovanna Bettini*  
**16.15 Coffee break**  
**An approach to the healing powers for the etheric forces**  
**Group exercise on the theme: how therapy contributes to the vitalisation of etheric forces. Exercise in the hybrid mode conference on anthroposophy and psychotherapy**  
*Ad Dekkers*

**18.30 Evening meal**  
**19.30 I breathe the force of life – reflections and exercises on the life ether**  
*Esther Böttcher, Johannes Weinzirl*  
**Conclusion with eurythmy**

### Thursday, 11 September

**08.15 Meditativ-artistic introduction: human beings creating etheric forces**  
*Harald Haas, Adèle Waldmann*  
**09.15 Presenting a comprehensive project of the worldwide psychotherapy community on burnout syndrome. A call from the future to restore the past, and to open up meaningful perspectives for physical and etheric body, for soul and spirit**  
*Zheni Nasi, Giovanna Bettini, Henriette Dekkers; Contributions from the audience*  
**10.10 The harvest of the conference, outlook for the future**  
*Ad Dekkers and Hartmut Horn*  
**10.30 Coffee break**



How can we stimulate the healing forces in dental practice?

Conference language  
EN

At a time when life forces are being strained by many factors in our lifestyle and our environment, it is particularly important to focus more intensively on the healing forces. How can they be stimulated and how can we as dentists help to strengthen the whole person by our work in the oral cavity? We are pleased to be able to present experiences from all over the world in order to work together to develop therapeutic options based on clinical cases. We look forward

to meeting you, dentists, physicians and therapists, who are interested in the human gateway, the mouth, and would like to find healing paths together with us.

The organising committee,  
Ana María Toro (Chile), Olivier Coutris (France),  
Andrea Pietschmann, Inge Mittag, Hanns Martin Zimmermann (Germany) and Alessandro Vannini (Italy)

Tuesday, 9 September

**15.00** Joint start of the conferences  
**Welcome**  
**Signatures of a great medicinal plant and the dual nature of the etheric body**  
*Karin Michael, Vesna Forštnerič Lesjak*  
**16.15** Coffee break  
**17.00** Welcome and introduction  
*Organising committee*  
**17.30** Implantation of the Goetheanum: dentists and etheric forces  
*Olivier Coutris, France*  
**18.30** Evening meal  
**19.30** Etheric forces as a source of health in the human being. Their representation in the oral environment  
*Ana María Toro, Chile*  
**20.00** The reappearance of Christ in the etheric. The Chaconne from Partita No. 2 for Solo Violin by J. S. Bach as a musical example  
*Hanns Martin Zimmermann, Germany*

Wednesday, 10 September

**08.15** Artistic and meditative prelude  
**09.15** Teeth-word and Logos – Speech therapy  
*Silvana Santoro, Enrica Dal Zio, Italy*  
**10.15** Discussion  
**10.30** Coffee break  
**11.15** The eruption of the primary teeth relates to the stages of small children up to the time of tooth change  
*Adriana Defendi, Brazil*  
**11.45** Etheric forces: contributions of functional orthopaedics for the healthy development of the human organism  
*Fabiola Limardo, Argentina*  
**12.15** Discussion  
**12.30** Lunch break  
**15.00** Fear and trauma in dental treatment. In the view of spiritual science  
*Renata Cancian, Brazil*  
**15.30** Humour as a possibility of awakening healing forces. The smile that represents grace, the state of present itself  
*Alexandre Rabboni, Brazil*  
**16.00** Discussion  
**16.15** Coffee break  
**17.00** Weak etheric constitution – Clinical case  
*Swapna Ferdinand Udayakumar, India*  
**17.30** A review of the interrelatedness of the four elements, the four categories of teeth and the four temperaments in the light of anthroposophical dentistry  
*Eva Horváthné Budai, Hungary*  
**18.00** Discussion  
**18.15** Speaking about the future of anthroposophical dentistry  
*All participants together*

**18.30** Evening meal  
**19.30** I breathe the force of life – reflections and exercises on the life ether  
*Esther Böttcher, Johannes Weinzirl*  
**Conclusion with eurythmy**

Thursday, 11 September

**08.15** Artistic and meditative prelude  
**09.15** Poster presentations and discussion  
*Moderator: Andrea Pietschmann, Germany*  
**10.15** Conclusion of Dentistry Specialist Conference  
*Organising committee*  
**10.30** Coffee break

Wednesday to Sunday,  
always at 08.15-09.00

## AM 1 Morning meditation (DE/EN)

How do we meditate? How are Buddhism and Christianity connected in the developmental stream of humanity? How will they continue to develop? What kind of mindfulness, concentration, meditation and prayer is really helpful and beneficial when, for what and for whom, especially with regard to inner development and (healing) cognition? We want to concern ourselves with these questions through practice and exchange, including modern meditation research and practice.

*David Martin, Silke Schwarz*

## AM 2 Singing in the western stairwell (DE/EN)

This course is for everyone who would like to sing! Singing brings us into contact with ourselves, with our voice as our very own potential. In this course you can experience how, focussed on the music, choral singing can playfully convey community-building resonance, take hold of our innermost being and build it up to the physical level.

*Viola Heckel*

## AM 3 Morning eurythmy (DE)

### Eurythmy – a moving meditation?

Moving before a long day with lots of sitting and taking things in, and encountering the essential qualities of life: heaviness-lightness, inflow-outflow, compaction-release, point-circle ... moving eurythmy elements in a simple way and taking away a concrete meditation for your own daily life. For physicians, these morning sessions are a special opportunity to encounter basic elements of eurythmy therapy. No previous knowledge is necessary. I look forward to seeing you.

*Sibylle Zehnder*

## AM 4 Loheland® gymnastics (DE)

‘Movement is an element of life. When we foster movement, we foster the human being in a comprehensive sense.’ (Louise Laanggard)

*Sabine Podehl*

## AM 5 Conversational work on the 9th and 14th class lesson (DE/EN)

Conversation about the elements in the 9th and 14th class lessons of the School of Spiritual Science.

*Marion Debus, Matthias Sauer*

Thursday, 11.15-12.30

## SS 1 9th class lesson (DE)

Free rendering of the class lesson, for members of the School only. Please bring blue card.

*Matthias Girke*

## SS 2 9 Class lecture (EN)

Free-form class lecture, for members of the first class of the School for Spiritual Science. Please bring your blue card.

*Adam Blanning*

## SS 3 Introduction to the School of Spiritual Science (DE)

This workshop is addressed to everyone who wants to familiarise themselves with the School of Spiritual Science and the schooling path of the class lessons. No previous knowledge is necessary.

*Karin Michael, Marion Debus*

## SS 4 Gospel work (DE)

This year in our work on spiritual deepening we want to look at the topic of community building in the Gospels and Luke's Acts of the Apostles. We are guided by the question of the spiritual dimension of the community and its significance for the art of healing. To this end we will deepen selected text passages in a joint dialogue. The goal is to recognise where and in what form community building is described in the Gospels.

In doing so, we can experience that in working together on and with these texts, community building also begins on a higher level.

*Georg Soldner, Jakob Kraul*

## SS 5 Healing power of truth and creation of the future (EN/RU)

There is the threshold between health and disease which one can experience because the healing power of body healing power of cosmic thoughts present in etheric body of human being – manifests itself. Therapist and patient need to recognise this power and find a way to follow it and to support it, also mentally, by earth thinking.

There is the threshold between spiritual and earth consciousness of the human being which mankind has crossed more than 100 years ago so every human soul is under the direct influence of cosmic thoughts which need to be recognised by the human spirit, by the 'I', in order to know oneself and to get the capacity to create oneself, health and future. Both kinds of cosmic thoughts are available for human thinking and at our workshop we will consider how to train treating thinking capacity and how to help the patient to combine pre-threshold and beyond-threshold experiences of the soul into a single image of reality.

*Tatiana Pavlova*

# Workshops on the observation, diagnosis and therapy of the etheric

20

Thursday, 17.00–18.30 /  
Friday, Saturday, 11.15–12.30

## **WS A1 Making a mistletoe medicine (EN)**

In this workshop we will make a new oral mistletoe medicine under simple laboratory conditions. First you will learn more about the background idea by looking at the mistletoe (*viscum album*) in a phenomenological way, from a genetic and evolutionary perspective. Then, together we will make this medicine from fir mistletoe leaves, fir needles (*abies*) and thyme. For enthusiastic participants: maybe we can find a gap in the programme for a walking excursion to find the fir mistletoe leaves ourselves.

*Kore Luske*

## **WS A2 Anthroposophical biography work has a health-promoting effect via the etheric body (DE)**

Our etheric body is important in matters of health and illness; At the same time, it forms our biographical memory as a time body. Findings from psychoimmunology and salutogenesis research show the connection between a life filled with meaning and health. In the 'Biography work in the house of our life' mind map method, biographical relationships are visualised. The therapeutic dialogue can now be used to work on how the I can consciously take over the shaping of life for the future and thus have a health-promoting effect. The basics of 'Biography work in the house of life'

and its possible applications are presented in a practical way and with case studies.

*Susanne Hofmeister*

## **WS A3 Health starts in the mouth! – The oral cavity as a mirror of the whole person – Dentistry update (DE)**

Dentistry is of great importance in keeping people healthy. Caries and periodontitis that are not treated can lead to serious health problems. Many human diseases, such as diabetes, cardiovascular diseases and autoimmune diseases, also lead to changes in the oral cavity. Treatment of the teeth and gums often has a positive effect on this. This workshop intends to focus on interdisciplinary cooperation between dentists and physicians, therapists and nursing staff. Rudolf Steiner already demanded: '[...] if only dentists would utilise their knowledge of the dental system [...] to give their patients [...] a kind of schematic view [...]'. This is [...] exceptionally important for the assessment of the overall organisation of the human being.'

*Hanns Martin Zimmermann*

## **WS A4 The heart and the etheric**

Heart function from the perspective of rhythm. Rhythm as a phenomenon of life. Understanding and treating arrhythmias.

*Uwe Schulze*

Workshops

21

## **WS A5 Medicine and sacrament – ways of transformation and transubstantiation (DE)**

How does earth substance become human substance? How does what is foreign become something of our own? How is what is living brought into death and what is dead brought into life? In the discussion group, approaches to these questions from a medical and Christian-sacramental perspective will be presented and deepened in discussion. The aim is to outline a Christian understanding of the relationship between people and the world.

*Ulrich Goebel, Hans Josef Bomholt*

## **WS A6 What is the relationship between co-operation and the etheric? (DE/EN)**

In the healthcare sector, it's all about making contacts, having trust and working together. These are qualities that are commonplace. The aspects of the work maintained in this way are generally not visible. These aspects must be constantly maintained. Only when they are missing does this become noticeable. In this working group we will work on the topics of connection, trust and co-operation using the qualities of the etheric and Rudolf Steiner's unwritten text to experience and reflect on them in different ways with practice and movement exercises.

*Sonja van Hees, Mirjam Jobse*

## **WS A7 The development, practice and future of the twelve nursing gestures in nursing, therapy, education and psychotherapy worldwide – an overview (EN)**

The 12 nursing gestures are meanwhile used as educational or therapeutic gestures not only in nursing. Their relationship with the zodiac can give them this overarching meaning. They form

a bridge to the inner movement of the therapist, educator or nurse in consideration of the need for healing. The gestures have a direct effect as a light-filled specification of the will to heal. We will deepen the topic using examples from practice, eurythmy exercises and reflections on the zodiac.  
*Rolf Heine, Merja Riijärvi*

## **WS A8 Experiencing the etheric (EN)**

Sense organs are a metamorphosis of spiritual forces from our pre-earthly existence. Not only do the senses enable us to perceive the earthly surroundings but, through schooling, they can reveal the spirit in the sense perceptible. In this workshop we will explore the nature of sense perception and the way in which different sense modalities are connected with the soul-spiritual and etheric-physical processes. To be truly experienced, any sense perception has to be united with the warmth of the heart at the centre of the I organisation. In the practical part of the workshop, we will engage in exercises that will lead us. Recommended reading: A Psychology of Body, Soul and Spirit, CW 115; lecture 2, 25 October 1909. Spiritual Science and Medicine, CW 312; lecture 8, 28 March 1920. Spirit as Sculptor of the Human Organism, CW 218; lecture 16, 9 December 1922.

*Branko Furst, Regula Utzinger, Christina Porkert-Furst*

## **WS A9 AI care technology within the art of healing (EN)**

Artificial intelligence has immense potential yet carries serious dangers. A few members of YIAM (Young Impulses in Anthroposophic Medicine) will facilitate a conversation on this future orientated task: How can care technology be properly integrated into the art of healing? We will observe current human thoughts and experiences

and try to understand the work of the different spiritual beings involved. A sharing of how the etheric body may be supported will aim to provide strength to work deeply out of anthroposophy. All welcome!

*Alana Boone, Tania Prince, Lara Wolf*

### **WS A10 The spiritual origin of the shape- and process-related order of the human body. The four qualities of substance (DE/EN)**

In *Extending Practical Medicine* we are asked in chapter 1 to fathom the medical system that humankind needs by means of strengthening our thinking. In the preceding years, Steiner developed the following foundations for such an understanding:

- a) The four qualities of substance in chapters 3-6 are living or inanimately mineral, they can also be soul-bearing or open to the I.
- b) The macroscopic and microscopic structure of the shape of the organs is created by the seven cosmic and five earthly formative processes.
- c) The differentiation of organ tissue into epithelial and mesenchymal parts (nerves and blood in chapter 6) is the result of a dual intention of the I, which is the prerequisite for building the body.
- d) The seven life movements and seven life stages which, with the help of the planetary effects, unite the form-creating and substance-creating forces between heaviness and lightness in such a way that organ-specific functional substances are created.
- e) The seven life processes enable the organism after birth to maintain itself, grow and reproduce with the help of the environment.
- f) All organs pass through the four quality stages of warmth, air, water and earth in their

development from the embryonic anlage to functional maturity.

- g) The four substance-typical diseases in chapters 8-11 point to an order of internal diseases that open the view to the nature of being ill.

These prerequisites for understanding seem to be necessary in order also to understand chapter 13 on the nature of illness and healing and chapter 17 on knowledge of the nature of substances as the basis of pharmacognosy in this medical system.

Individual content from Rudolf Steiner's lectures will be integrated into the presentation:

- GA 137; 11 June 1912 (7 life movements)
- GA 170; 12+13, 15 August 1916 (7 life processes)
- GA 202; 14 January 1920 (dual intention of the I for body development)
- GA 208; 28+29 October 1921 (7+5 formative processes, 7 life stages)

*Hans Broder von Laue, David Martin*

### **AG A11 Learning to manage the seven life processes – the basis of an anthroposophically extended diagnosis and therapy (DE/EN)**

Life develops physically, mentally and spiritually in seven interlinked different processes. They are the source of a healthy life, in their deformation they degenerate into pathogens.

We will learn to recognise the life processes and, using clinical pictures, practise to apply them in diagnosis and therapy, whether as physicians, nursing staff or therapists.

*Martin Günther Sterner*

### **WS A12 Extending Practical Medicine and the phenomenology of the etheric in protein metabolism: consequences for practice (DE/EN)**

On the basis of the interesting protein metabolism description in chapter 9 of *Extending Practical Medicine* we will try to uncover the action of the etheric in the human organism and examine its consequences for practice.

*Christina van Tellingen, Majella Schoonman-van Maaren, Arie Bos*

### **WS A13 Etheric laws and dynamic processes in the eurythmy therapy course and in the case histories (DE)**

In this workshop we will deepen our understanding of eurythmy therapy by looking at etheric laws and dynamic processes. Together we will examine the eurythmy therapy exercises developed by Rudolf Steiner and their application in documented case histories. Through practical exercises and joint reflection, we will explore the therapeutic significance of individual movements and sound sequences. This will enable participants to better understand Steiner's therapeutic approaches and to apply them independently in their own therapeutic practice.

*Norman Kingeter, Rob Schapink*

### **WS A14 Fundamentals (EN)**

The medical system of anthroposophy - conceived as a whole in *Extending Practical Medicine. Fundamental Principles Based on the Science of the Spirit*. In *Extending Practical Medicine*, no constitutional element is mentioned as often as the I-organisation as being the source of healing activity within the human constitution - even though it is ultimately the etheric organisation that transmits the healing forces to the physical organisation. We want to explore this and let the composition of the book take effect on us in its entirety.

*Michaela Glöckler*

### **WS A15 How to repay animals for their help – sacrifice? (EN)**

The animal that endures life's labours at our side is not a being separate from us. Animals feel our emotions and are affected by all our spiritual sheaths. Animals have the ability to see both human etheric and astral auras, where thoughts, feelings and intentions are all reflected in different colours. These relations are revealed very differently in the etheric, elemental, astral, as well as in the higher spiritual worlds. Animal diseases are transferred from us through the mobility of the pathological elemental beings. Therefore, all 'true' healing must pass through human beings, because the relationship between humans and animals is marked by their sacrifice but also by our abuse. Now, the time has come for humans to make sacrifice for them. Two veterinarians and one therapeutic eurythmist are working together through three steps to bring awareness to each workshop participant on what can concretely be done for their pet or farm animal. The aim is to learn new ways to look at the nature of different animals, and also to explore, through eurythmy, whether we can contribute to the harmony of an animal through sounds, in our language. In case of illness, but often in situations that could be considered traumatic, we often do not exactly know how to support an animal. For experimenting how the eurythmy sounds affect a cow, a horse, a donkey, or a dog, we shall visit some of the animals found on the Goetheanum grounds. 'There will come a way of treating animals thanks to which the human being, after having pressed them down, will redeem them.' (Rudolf Steiner)

*Sabrina Menestrina, Christine van Draanen, Are Thorensen*

**WS A16 Introduction to the 7-Fold Map (EN)**

The 7-Fold Map is a graphic tool and imagination, integrating multiple 7-fold qualities impacting the human being. Developed by James Dyson and William Bento over many years of collaboration, it is a tool for both diagnostics and therapeutic intuition. It includes planetary influences and stages, the 7 human sheaths, life and fallen life processes, learning processes, elements and ethers, 7 organs, levels of thinking and will, psychological stages, and other psycho-spiritual constructs. Of noted importance is the integration of physiological and psychological processes, thus helping physicians and counsellors of all kinds consider the full body-soul-spiritual constitution of the patient and be alert to fruitful arenas for soul exploration. Ways to use the map will be explored. Participants will have to opportunity to work actively with the map in relation to cases.

*Susan Overhauser, James Dyson*

**WS A17 The light root - Dioscorea batatas - in agriculture and medicine (DE)**

On occasion of the Agriculture Course in Koberwitz in 1924, Rudolf Steiner mentioned the Chinese Dioscorea batatas ('light root') as a plant of significance for the future. We would like to introduce you to the botany, the agricultural cultivation of dioscorea, its use as a food and as a medicinal plant in traditional Chinese medicine and in the treatment of internal endocrinological diseases in anthroposophic medicine.

*Bettina Schleyerbach, Jing Zeng,  
Nicolai Schmidt, Noemi Böken, Andreas Busl,  
Ute Küpper, Hartmut Ramm*

**WS A18 Moon - Sun - Saturn: Stages of a modern path of initiation. Observing the****effect of (therapeutic) eurythmy and in this way experiencing the physiology of the human etheric body (DE)**

Work on the content of the concluding sixth eurythmy therapy lecture (CW 315) from Sunday morning, 17 April 1921, and joint eurythmy movement and observation - important and an orientation for all those working in therapy and education! Please bring CW 315 (possibly also CW 313) and eurythmy shoes.

*Wilburg Keller Roth, Johanna Voigt*

**WS A19 Mistletoe in integrative anthroposophical oncology - deepening the understanding of its healing powers in the human organism as a whole (DE/ES)**

In this workshop we want to deepen the spiritual understanding of the effect of mistletoe with regard to the healing forces present in human beings. We will present single case discussions as well as innovative suggestions for integrative anthroposophical cancer treatment from everyday practice in Lima / Peru, for example for bone metastases.

*Yván Villegas, Maike Kergel*

**WS A20 Extending Practical Medicine, chapter I: Metamorphosis of formative forces into thinking forces as the basis of anthroposophical neurology (DE/EN)**

In the first chapter of *Extending Practical Medicine*, the metamorphosis of organic formative forces into thinking forces is introduced as a central discovery of the anthroposophical understanding of the human being. By means of the inversive metamorphosis from intestine to brain as well as the biochemistry of neurotransmitters and clinical disease patterns, this working group

will consider the fruitfulness of this discovery for an understanding of the capacity to think in terms of such a view of the human being and for clinical practice in neurological diseases.

*Siegward-Markus Elsas*



# Workshops to experience art, music, movement, pharmacy, the garden and research

26

Workshops

Friday and Saturday, 15.00–16.15

## **WS B1 Perceptions of the four ethers in the scent of plants (DE)**

The four ethers have their origin in the sun. If plants are irradiated with selected areas of the spectrum, UV radiation, blue, red and infrared, individual ethers are intensified. The scent of the plants enables us to experience their effects intensively. We will translate the scent of plants into colourful pictures in order to come to inner experiences of the effects. In the second part, we will examine the scent of different vegetabilisation stages of metal-fertilised plants and have a lively discussion about their respective relationship to the ethers.

*Torsten Arncken*

## **WS B2 Un acercamiento al método Steigbild (ES/EN)**

En este workshop vamos a trabajar con el Steigbild método según el desarrollo de WALA, desarrollando imágenes y valorando sus características.

*Paula Mora*

## **WS B3 Medicine for the future, grasp what will be in what exists (EN/ES)**

Working with principles of therapeutic eurythmy to nurture our imaginative and intuitive faculties. This workshop is for physicians, nurses, therapists to experience, through movement and

through observation, how therapeutic eurythmy can be brought into a practice of self-knowledge and renew our understanding of concepts such as the fourfold human being, enriching and possibly changing the way we understand our patients. We will explore therapeutic eurythmy as a gift on the path to a medicine for the future. Eurythmy practices will be introduced that can be carried forward after the conference, as a practical and meditative deepening of our understanding of *Fundamentals of Therapy*. Bring eurythmy shoes if you have them.

*Tiffany Russey, Mariela Gatica Valdes*

## **WS B4 Self-care to engender harmony of being (EN/ES)**

Through bodily and sensory enrichment utilising qualities of touch and therapeutic substances, participants will be introduced to, learn, and experience self-care activity that contributes to maintaining health in body, mind, and spirit.

*Elizabeth Sustick, Antonia Olavarria*

## **WS B5 Making music together (DE/EN)**

Anyone who brings along their musical instrument and would like to make music together is cordially invited.

We meet at the times offered (2 x 1 1/4 hours). Those who wish can bring sheet music, but there will also be sheet music from street music, can-

ons, tango, klezmer, Béla Bartók and also classical polyphonic pieces to choose from. As a whole group or in smaller formations, we could then contribute to the enjoyable success of a closing evening at the end of the conference. Aspects of playing together without a classical conductor can be interesting. Conference participants who play a musical instrument, can read music and want to make music are invited. Please bring: your own musical instruments, possibly sheet music (pieces that might be suitable for playing together).

*Johannes Hermann, Elma Pressel*

## **WS B6 Working with the lemniscate as archetype (DE)**

Addressing the etheric with the archetype of the lemniscate – drawing, moving, touching and experiencing the lemniscate in joint activity. How can the stimulation of the etheric be recognised?

*Stefanie Hess, Unda Niedermann-Veith*

## **WS B7 Courage – a liver function? (DE/EN)**

Courage for the future, this is what we want to do practically with a series of liver compresses with different substances, and experience through the effects how the liver, the organ of Jupiter, re-enters into dialogue with its planetary siblings, if it has fallen silent, or is strengthened.

*Astrid Sterner*

## **WS B8 Plant colours workshop (DE/EN/FR)**

In two workshops of 75 minutes each, we will set out to explore the living with our senses and in lively interaction. We will work with plants, as they are ideal for perceiving the etheric, and then artistically process our observations with

handmade plant colours. This kind of exploration enables an intense and conscious creative process that helps us to get closer to the living world. Creating art, however, is yet another level where we encounter the etheric. By activating our senses, they become enlivened and our life processes are animated and ensouled. This will inspire our own vitality and offer healing in a materialistic environment. (With reference to GA 170, p. 149.)

*Corinne Roy, Elisabeth Körber*

## **WS B9 Experience the healing power of the instruments from anthroposophical music therapy (DE/IT)**

Anthroposophical music therapy uses a wide variety of musical instruments and the voice to support people in their healing processes. The breath and the etheric organisation are often central to the treatment. Experience it for yourself! In this workshop, instruments can be heard, experienced and played – the exchange of experiences will provide an understanding of their principles of action.

*Laura Piffaretti*

## **WS B10 The four types of ether in speech (DE)**

With the help of practical exercises from therapeutic speech, we look at the formative and life forces in the speech process and explore how speech can become a healing source of strength for therapeutic-medical dialogue. The meditation 'What I speak from out of my physical body is appearance – I must speak from out of my etheric body to penetrate into true reality' from Rudolf Steiner for Ita Wegman will serve as a source of inspiration for us.

*Esther Böttcher*

27

### **WS B11 Lightness, well-being, vitality! (EN/PT)**

In this workshop we will experience in eurythmy two of Steiner's meditations for the cultivation of the vital forces. We'll also practise simple exercises in which we can observe the emergence of vital qualities – such as lightness, well-being and relaxation.

*Isabela Suoza Soares*

### **WS B12 Charged stillness: the lemniscate and the four ethers in eurythmy (EN)**

Marjorie Spock (1904–2008) was born in New Haven, Connecticut, USA, and received her eurythmy diploma in Stuttgart in 1930. Marjorie studied therapeutic eurythmy with Mrs Baumann. As a biodynamic farmer, renown environmentalist, eurythmist, and therapeutic eurythmist in the USA, Marjorie developed eurythmy exercises relating to the ethers and the etheric, had profound insights into rod exercises, the zodiacal and planetary gestures, the path of the intervals – all of which she considered to be innate and essential for therapeutic eurythmy, which she believed is to be accessible for anyone. Therapeutic eurythmy offers progression into what is dynamic and healing.

Michael Chapitis, therapeutic eurythmist (Canada) worked with Marjorie Spock the last eight years of her life. This workshop is based on developing a connection to the life-world through eurythmy. Bring eurythmy shoes if you have them.

*Michael Chapitis*

### **WS B13 Fairy tales as a healing support for the etheric (EN)**

The child's etheric formative forces, which determine the development and health of the body, are nourished by the fairy tale. Imagination gives a direct experience of these formative powers working in nature and in the life of soul. This workshop attempts to gain conscious knowledge of the spiritual sources from which the fairy tale pictures brought by brothers Grimm, Novalis and Goethe arise, and how we can create our own healing stories and discover the treasures in our own soul. Please bring eurythmy shoes if possible, but not necessary.

*Julia O'Leary*

### **WS B14 Four rhythmical baths as developed by Dr med Ita Wegman in oil dispersion as developed by Werner Junge (DE/EN)**

What is oil dispersion? How is it produced? The benefit of oil dispersion.

Four rhythmical baths: overview, differences, effects. Effect of different bath additives: decoc-tion, emulsion, oil dispersion.

The participants will meet punctually at 14.50 in front of the south entrance so that we can walk together to the Haus Martin retirement home and not disturb the activity there unnecessarily. Participants should not report individually at Haus Martin. Anyone wishing to be a test person in the bath should bring swimwear.

*Sabine Gerber, Michaela Schnur*

### **WS B15 A journey through picture forming methods in pharmaceutical processes (EN/IT)**

During the workshop we will dive into the language of copper chloride crystallisation and circular chromatography. We will explore how to

interpret the images through an innate ability of the human being: kinaesthetic engagement. Images made with medicinal plant extracts will be used.

*Greta Guglielmetti*

### **WS B16 Guided tour through the scientific poster presentation (DE)**

Guided presentation through the submitted posters on research in anthroposophic medicine on Friday, 12 September at 15.00.

*Bettina Berger, Erik Baars*

### **WS B17 Scientific poster walk (EN)**

Guided presentation through the submitted posters on research in anthroposophic medicine on Saturday, 13 September at 15.00.

*Erik Baars, Bettina Berger*

# Scientific poster presentation on research and guided tours through the scientific poster exhibition

30

Dear Colleagues!

We warmly invite you to contribute to the scientific poster presentation as part of the annual conference of the Medical Section, which will take place in the form of an exchange of research results in two directions:

- Studies to investigate the therapeutic rationale or the success of therapy (e.g. observational studies, application studies, best cases)
- Current studies on topics related to anthroposophic medicine (e.g. clinical studies, Goethean studies)

Abstracts can be submitted in German or English; they will be reviewed by 2-3 qualified colleagues (Review Board).

## Participation

The invitation to submit posters is addressed to all those who are active in research in anthroposophic medicine.

## Poster abstract, maximum 350 words

The one-sided abstract should include:

1. Title
  2. Name, title and institution of the authors
  3. Background and question
  4. Material and methods
  5. Results
  6. Discussion and conclusion
- Literature

(Phenomenological approaches should be structured in coherent steps).

## Abstract submission

Please send your abstract no later than 10 August 2025 by email to Dagmar Brauer:  
[dagmar.brauer@medsektion-goetheanum.ch](mailto:dagmar.brauer@medsektion-goetheanum.ch)

## Poster format

DIN A0 (approx. 119 x 84 cm), portrait format

The abstracts of the successfully presented posters will then be published in *Der Merkurstab* (section "Berichte aus Wissenschaft und Forschung" (Scientific and Research Reports). We therefore request that you adhere to the above structure.

We hope that colleagues from all specialist fields of anthroposophic medicine will participate!  
Warm regards  
Marion Debus, Karin Michael, Adam Blanning

## Guided tours through the scientific poster exhibition

Dr phil Bettina Berger, University Witten / Herdecke, and Prof Dr med Erik Baars, University of Applied Sciences Leiden (NL), will lead the poster sessions:

## Friday, 12 September

Guided tour at 15.00 in German,  
Dr phil Bettina Berger

## Saturday, 13 September

Guided tour at 15.00 in English,  
Prof Dr med Erik Baars

# Registration for conference

31

We look forward to your participation in the annual conference of the Medical Section at the Goetheanum. The conference is divided into two parts: specialist conferences of various professional groups in anthroposophic medicine and the multiprofessional conference.

On Thursday from 11.15 to 12.30 (between the two parts), School work for members of the School of Spiritual Science, an introduction to the work of the School open to all, as well as spiritual deepening work is planned. Both the participants of the specialist conferences and those of the multiprofessional conference are free to take part in this unit; it does not have to be booked separately.

We would, of course, be delighted to welcome you as guests for the whole of the conference. You can, however, also just register for one specialist conference or for the multiprofessional conference. Throughout the whole conference, the lunches are included in the conference fee. The evening meal can be booked separately as required.

The lectures of the conference will be translated into German, French, Italian, Spanish, Russian and English. For the specialist conferences, please note the languages listed in the respective programme.

The certificates of attendance will certify the further training points approved by the GAÄD and VAOAS.

REGISTRATION in German:

<https://goetheanum.ch/de/veranstaltungen/jk25>

REGISTRATION in English:

<https://goetheanum.ch/en/events/jk25>

Guided tours on various topics will be offered at the Goetheanum during the annual conference. Further information and registration at the information table during the conference.

## Price structure of the annual conference of the Medical Section 2025

Booking of both conference parts with discount as against individual booking, incl. all lunches

Normal price	CHF 600
Reduced price	CHF 470
Student price	CHF 280
Support price from at own discretion	CHF 600

## Ticket price for the specialist conference, incl. 1 lunch\*

Normal price	CHF 260
Reduced price	CHF 200
Student price	CHF 110
Support price from at own discretion	CHF 260

\* Lunch on the Thursday before the start of the multiprofessional conference can be booked separately if required.

## Ticket price for the multiprofessional conference, incl. 2 lunches\*

Normal price	CHF 390
Reduced price	CHF 290
Student price	CHF 190
Support price from at own discretion	CHF 390

\* Lunch on the Thursday before the start of the multiprofessional conference can be booked separately if required.

## Contact

Medical Section at the Goetheanum  
P.O. Box • 4143 Dornach • Switzerland  
[info@medsektion-goetheanum.ch](mailto:info@medsektion-goetheanum.ch)  
<https://medicalsection.goetheanum.ch>

