

Welcome to the Goetheanum Campus Anthroposophy Studies Student Guide



Contents

Welcome	3
The Sections	4
Checklists	5
About the Program	6
Events at the Goetheanum	7
Join our Telegram Group	7
Student Pass	7
Meet the Faculty and Team	8
Admission	9
General conditions	9
Student Agreement	9
Accessibility & Learning Support	9
Travelling to Switzerland	10
Residence Registration	10
Health Insurance	11
Accommodation on Campus	11
Arriving at the Goetheanum	12
Moving around the Goethanum Campus	13
Campus Map	14
Places of interest on Campus	15
Useful services in the area	17
Emergency Numbers	19
Contact	20

Welcome

Dear students,

We are delighted that you have decided to join us for the **Anthroposophy Studies at the Goetheanum - School of Spiritual Science!** With this Student Guide we want to warmly introduce you to the campus.

During the program, you will have the opportunity to learn about Anthroposophy, Rudolf Steiner's work and its manifold expressions in different fields. You will also be able to experience the Goetheanum, learn about its history, work and participate in the activities and events taking place this year.

This handbook contains important information to help you prepare for your study trip and find your way during the first weeks.

We hope you find this content valuable and we look forward to supporting you in making the most of this learning experience.

With our best wishes for an inspiring and meaningful time at the Goetheanum,

Constanza Kaliks

Goetheanum - School of Spiritual Science
Executive Council
Pedagogical Section
General Anthroposophical Section

Andrea de la Cruz

Goetheanum - School of Spiritual Science
Studies & Further Education
General Anthroposophical Section



The Sections

About the Goetheanum - School of Spiritual Science

The School of Spiritual Science is homed at the Goetheanum in Dornach, Switzerland. It consists of twelve Sections devoted to research and learning in the fields of natural and social sciences, the humanities, the arts, and education. At the heart of the work of each section is the attempt to develop a knowledge of life in becoming, of the human being in its physical, soul and spiritual reality, and how our participation impacts and transforms the world.

Each Section works actively on research in its own discipline and organises events and conferences to bring professionals together, foster collaboration amongst individuals and institutions, and disseminate research findings.

The **Goetheanum Studium** is a department of the **General Anthroposophical Section**, whose main research focus is Anthroposophy itself.

Contact information

Agriculture Section

✉ sektion.landwirtschaft@goetheanum.ch
📍 Glashaus, Goetheanum Campus

General Anthroposophical Section

✉ allgemeinesektion@goetheanum.ch
📍 West, First Floor, Goetheanum building

Literary Arts and Humanities Section

✉ ssw@goetheanum.ch
📍 Rudolf Steiner Halde, Goetheanum Campus

Mathematics and Astronomy Section

✉ mas@goetheanum.ch
📍 Mathematics and Astronomy Institute, Goetheanum Campus

Medical Section

✉ team@medsektion-goetheanum.ch
📍 Albert Steffenweg 2, Dornach

Natural Sciences Section

✉ science@goetheanum.ch
📍 Glashaus, Goetheanum Campus

Pedagogical Section

✉ paed.sektion@goetheanum.ch
📍 North, Ground floor, Goethenaum building

Performing Arts Section

✉ srmk@goetheanum.ch
📍 South, Third floor, Goetheanum building

Section for Inclusive Social Development

✉ info@inclusivesocial.org
📍 Ruchti-Weg 9, Dornach

Social Sciences Section

✉ sektion.sozialwissenschaften@goetheanum.ch
📍 Social Sciences House, Goetheanum Campus

Visual Arts Section

✉ sbk@goetheanum.ch
📍 Rudolf Steiner Halde, Goetheanum Campus

Youth Section

✉ mail@youthsection.org
📍 East entrance, Goetheanum building

Checklists



Get ready!

Use the lists below to help you organize your study trip

Before the beginning of classes:

- ☒ Send online application
- ☒ Have the admission interview

Sign and send the **Student Agreement** (available in the Student Area)

Fill and send the **Emergency Contact form** (available in the Student Area)

Pay tuition fee by the first day of classes

Inform the Goetheanum Studium office of your arrival date

Inform the Student Residence administrator of your arrival date

Review the class schedules

Join the course's Telegram Group Chat

Travel documents and resources:

Valid travel documents (Passport/ID)

(Contact the Swiss embassy in your country for details on entry and visa)

Read carefully the information on Residence Registration (page 9)

2x ID photos for your Student Pass and records

Swiss Health Insurance or EU Health Card or Swiss Care

(only for students staying over 3 months. Read about it on [page 10](#))

Sufficient financial resources to support yourself during your stay

Credit card for international use

EUR/CHF in cash for small transactions

Consider bringing: (these are recommended, not required)

The books we will study during the terms (in any language you prefer, or buy/borrow a copy at the Goetheanum)

Eurythmy shoes

Art supplies (sketch pad, watercolours, pastels, pencils)

Hiking shoes and outdoor clothing (Nature Observation classes)

Plug adapter

Laptop/tablet/recording device (for your research project or homework)



About the Program

The Anthroposophy Studies at the Goetheanum is an international program aimed at anyone seeking an understanding of Rudolf Steiner’s work and how Anthroposophy relates to various fields.

The curriculum features lessons focused on the study of Rudolf Steiner’s writings, weekly seminars, artistic courses, and ongoing nature observation classes.

Log in to the Student Area using the username and password you received.

There you will find the detailed program, class schedules, registration forms and more.

Go to Student Area



Autumn Term:
Anthropology: What does it mean to be human?
Book Study:
Theosophy, Rudolf Steiner

Winter Term:
Freedom, Knowledge and Responsibility
Book Study:
The Philosophy of Freedom, Rudolf Steiner

Spring Term:
Praxis
Book Study:
Anthroposophical Leading Thoughts, Rudolf Steiner



Join our Telegram Group

Schedules are subject to changes, so be sure to join the course's **Telegram** group chat to receive important updates.

This will be our main communication channel to inform you of any time changes, opportunities and general information. Click the button below to join!

Join Telegram Group



If you do not have the Telegram app installed yet, you can download it [here](#).

Events at the Goetheanum

Many events take place at the Goetheanum throughout the year. Conferences, lectures, theater plays, eurythmy performances and more.

Free entrances and discounts are available upon presentation of your Student Pass.



Check the [Events Calendar](#) regularly to make sure you do not miss anything happening at the Goetheanum during your time on campus.

Student Pass

As an enrolled student you will receive a **Goetheanum Student Pass** valid for the duration of the course. This entitles you to reduced or free tickets for lectures, stage performances and conferences at the Goetheanum.

It also gives a 10% at the **Goetheanum Bookshop, Cafeteria and Speisehaus**, as well as free book loans from the **Goetheanum Library**.

Be sure to bring a passport-sized photo to obtain your card.





Meet the Faculty and Team

Morning Lessons and Seminars



Bodo von Plato



Constanza Kaliks



Jan Göschel



Matthias Rang



Nathaniel Williams



Nicolas Criblez



Philipp Reubke



Peter Selg

Arts and Nature Observation



Barbara Schnetzler
Sculpture



Benno Otter
Nature Observation



Esther Gerster
Painting and Drawing



Ioana Farcasanu
Eurythmy



Agnes Zehnter and Gosha Gorgoshidze
Theater and Speech

Goetheanum Studium Office



Andrea de la Cruz
Coordination
and Admissions



Mayumi Matsumiya
Media and
Communication



Admission

Acceptance to the program is contingent upon submission of the application form and an admission interview. The number of spots is limited.

General conditions

Students must be over 18 years old to apply. No previous education is required for study at the Goetheanum, apart from a good command of the course language. We suggest a B1 level for both English and German courses. In some cases a level equivalent to A2 will suffice provided that the students commit themselves to further language training. This will be assessed in the admission interview.

Student Agreement & Deposit

Prior to the start of classes, students are requested to review and sign an agreement outlining the terms and conditions.

To formally secure a place in the Goetheanum Studium on-campus programs, students must pay a non-refundable deposit of CHF 50. This requirement will be indicated in your admission letter, and the amount will be deducted from your tuition fees at registration.

Accessibility & Learning Support

The Goetheanum aims to be an accessible and inclusive place for everyone who wishes to study Anthroposophy. Within the resources available to us, we are committed to taking practical steps toward this goal. To help us support you, we warmly invite applicants to share any access or learning support needs that may help you in your study process. You may communicate this in the application form, by emailing our team, or through a conversation with a staff member.

The Goetheanum faculty strives to teach responsively. The ways in which we can adapt to individual needs depend both on the information students share with us and on the resources available within the school. We will communicate clearly and transparently about the support we are able to offer. Although we may not always be able to meet every request, we will consider each one carefully and do our best to support your participation.

Travelling to Switzerland

Switzerland is a confederation of 26 cantons. The Goetheanum is located in Dornach, in the canton of Solothurn, where the official language is Swiss German. Dornach is situated 10 kilometers south of Basel, Switzerland's third-largest city and the nearest airport.

Students from abroad should contact the Swiss Embassy in their home country for information about entry and visa requirements.

It is also important to secure sufficient financial resources for living in Switzerland before starting the course. A monthly budget of CHF1.200- can provide a basic standard of living.

Residence Registration

Note: If you plan to study at the Goetheanum for only one trimester, you **don't** need to register as a resident.

If you plan to study at the Goetheanum **for more than one trimester**, it is mandatory to register as a resident with the Dornach municipal authorities within two weeks of your arrival.

Important information on residence registration and health insurance for students staying longer than three months is provided on the Goetheanum Studium website under the 'Info' menu [\(see here\)](#).

Please read this page carefully. Review the documents checklist to help you prepare the required documentation for the registration process.



Health Insurance

- **For students enrolled for only one trimester:**

For some countries, a travel health insurance is mandatory to enter Switzerland. Check the visa requirements for your country before traveling.

- **For students enrolled for more than one trimester:**

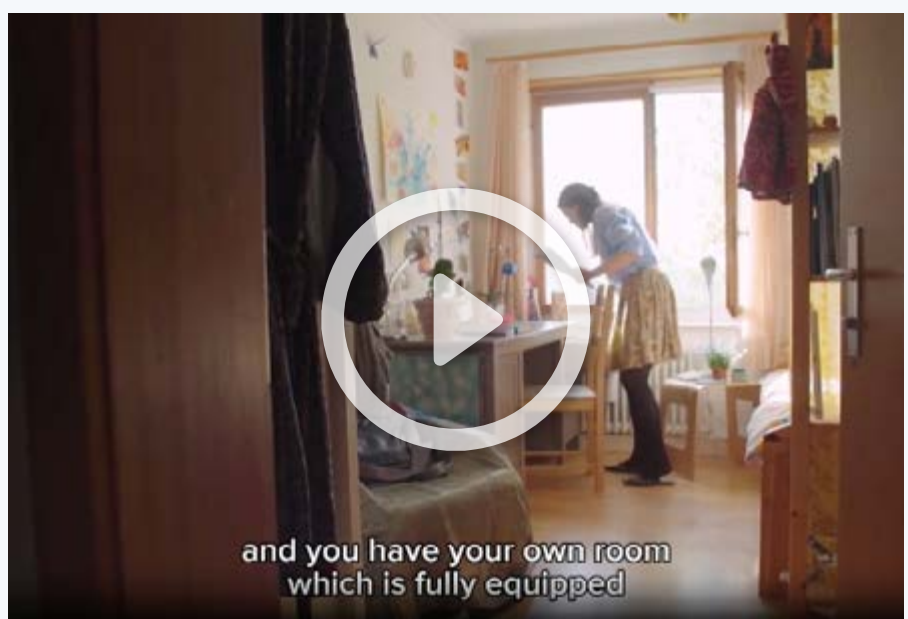
You must have a Swiss health insurance valid for your entire residence time or an exemption of health insurance, such as the EU Health Card or SwissCare. Read carefully the [Health Insurance Guidelines](#) on our website.

Accommodation on Campus

The Goetheanum Campus has a Student Residence with six shared apartments and 36 furnished single rooms. Each apartment has a fully equipped kitchen and a shared bathroom. Availability is limited.

Click the video

to get an overview of
the Student Residence
on Campus!



For everything related to the Student Residence on Campus, please refer to:

Nanna Osmer

Student Residence office

studentrooms@goetheanum.ch

+41(0)763691014

If you have secured your reservation at the Student Residence, you will receive an email from **Nanna Osmer** close to the beginning of classes (around one month before classes start) with all the details regarding rent, rules, amenities, etc.

Note: The Student Residence office operates on a part-time schedule. We appreciate your patience if the response time is longer than usual.



Arriving at the Goetheanum



Arriving Basel by air

Basel Airport (EuroAirport Basel/Mulhouse/Freiburg):
Shuttle bus to Basel SBB Railway Station (15 minutes)

Zurich Airport

Direct train connections to Basel SBB Railway Station (75 minutes)

From Basel to Dornach (Goetheanum)



By train

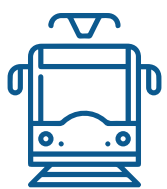
From **Basel SBB** Railway Station, take the **S3 train** in the direction to Laufen (it leaves every 30 minutes). Get off at the third stop "Dornach-Arlesheim".



From Dornach train station, take the **Bus 66** just across the rail. Hop off at "Goetheanum" stop. The bus leaves every 20 minutes.



You can also walk from the train station **straight uphill following the signs** to the Goetheanum. It takes about 15 minutes going up. If you have luggage, taking the bus is recommended.



By tram

As an alternative to the train, you can take the **tram** from **Basel SBB** and from many parts of the city. Take the **Line 10** towards Dornach, get off at the last stop "Dornach". From there, continue with Bus 66 or by foot as indicated above.

Buying tickets



Buy train or tram tickets from the **ticket machines** inside Basel SBB station or at the Tram stops. The machine accepts CHF banknotes, coins and international credit cards.

You can also [buy tickets online here](#) or [download the SBB mobile app](#).



By car

Drive towards Delémont (H18), exit Reinach-Süd and follow the signs to Dornach and the Goetheanum.

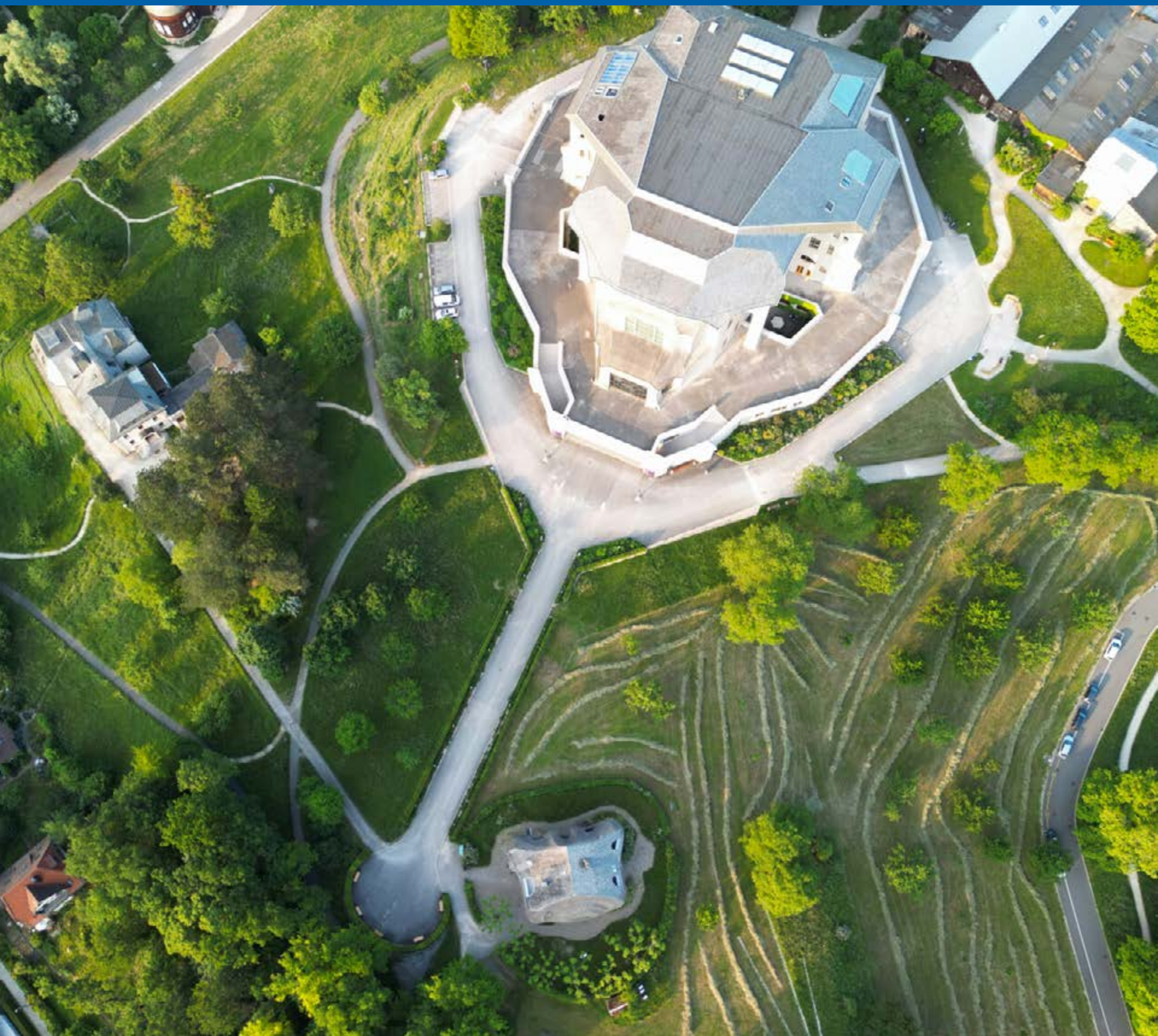
Note: If you plan to bring your car during your studies, contact Nanna Osmer about parking and fees. Contact information is on the previous page.



Moving around the Goetheanum Campus

The Goetheanum is located on a 12-hectare site with many outbuildings where the eleven Sections of the School of Spiritual Science carry out their work. It is surrounded by a large green area where animals and plant species coexist in harmony according to the principles of biodynamic agriculture.

To help you get around and ensure a smooth start to your classes, the map on the next page shows important locations on campus. Review your **Class Schedule** ([available on the Student Area](#)) and find the locations of each class on the map. This will help you be on time and ready to go!





Campus Map

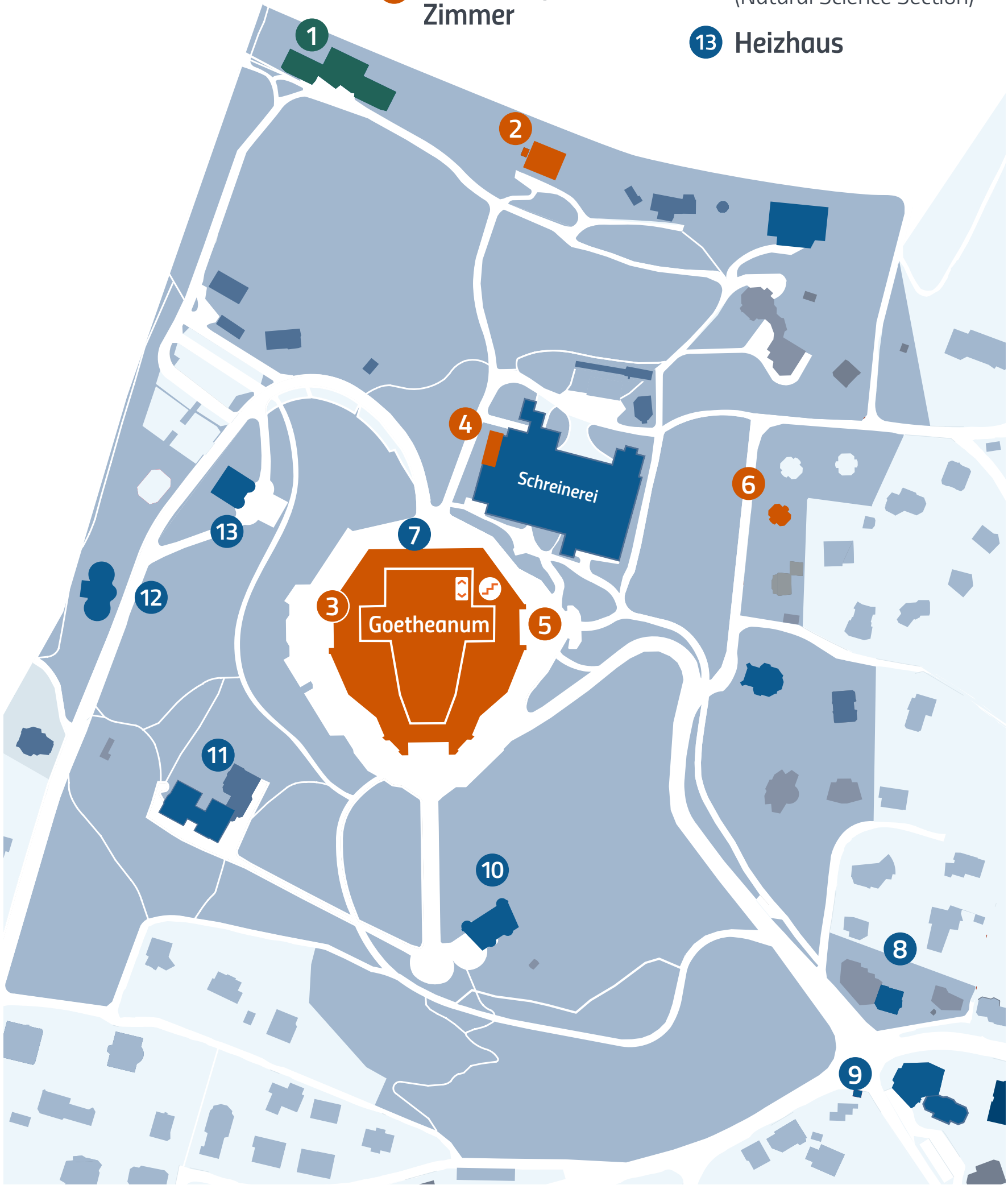
1 **Studentenwohnheim**
Student Residence

Classrooms

- 2 **Haus Schuurman**
- 3 **Terrasensaal**
(Goetheanum ground floor, North Side)
- 4 **Plastizieraum**
- 5 **Südatelier**
(Goetheanum top floor, South Entrance)
- 6 **Edith Maryon Zimmer**

Places of interest

- 7 **Library entrance**
- 8 **Youth Section House**
- 9 **Speisehaus** 🍴🕒
- 10 **Rudolf Steiner Archive**
- 11 **Rudolf Steiner- Halde**
- 12 **Glashaus**
(Natural Science Section)
- 13 **Heizhaus**





Places of interest on Campus



Haus Schuurman

Did you know that Haus Schuurman was the last building designed by Rudolf Steiner? It was sketched in 1924 and built between 1924-25.

Located just a few steps away from the Student Residence, **here is where most of your classes will take place.** On the ground floor, you will also find the Goetheanum Studium office.

Office hours:

Tuesday, Thursday and Friday: 08:30 - 11:30

Request an appointment via Telegram or email

Goetheanum Library

Tuesday and Friday 14:00 - 18:00

Books return and renewal

Borrowed books can be returned in the library during the opening hours or at the Goetheanum reception desk. Renewals of the lending period have to be addressed to the library via email: ausleihe@goetheanum.ch

Information and requests: bibliothek@goetheanum.ch

Goetheanum Bookshop

Tuesday to Friday 10:00 - 18:00

Saturday 09:00 - 17:00 | Sunday 11:00 - 16:00 | Monday closed

Opening hours may vary during events, conferences and holidays.

Information: info@goetheanum-buchhandlung.ch

Goetheanum Cafeteria

Monday to Friday 09:00 - 17:00

Located at the lobby (Wandelhalle) of the Goetheanum.

Discounts available upon presentation of the Student Pass.



Speisehaus

Restaurant

Monday to Friday 9:00-15:00 | Saturday and Sunday 11:00-17:00

Store and Bakery

Monday to Friday 08:00-18:30 | Saturday and Sunday 08:00-16:00

Discounts available upon presentation of the Student Pass.



Youth Section

The Youth Section is one of the 12 sections of the School of Spiritual Science. Its purpose is to offer young people a space for exploring ideas, developing initiatives, and shaping the future out of their unique potential and creativity.

Weekly social gatherings and many events take place at the **Youth Section** house. All students, regardless of age, are welcome to participate!

Stay updated on upcoming activities by joining the Youth Section's Telegram chat [here](#).

Schreinerei

The Schreinerei (carpentry workshop) dates from 1913 and was originally intended for use during the construction of the Goetheanum as a place to store machinery and for craftspeople to work. Today this wooden structure hosts many events, lectures, meetings, theater and eurythmy performances.

Sculpture classes are held in one of the adjoining rooms, the Plastizimmer.



Edith Maryon Zimmer

Haus Maryon, run by the General Anthroposophical Section, has a room for quiet reading and study **available on request**. A library is also at the disposal of students.

The space belonged to Edith Maryon and Assia Turgeniev, close collaborators of Rudolf Steiner, and artists who helped design elements of the first Goetheanum.



Useful services in the area



Other relevant information such as SIM cards, public transport fares, student jobs, etc. can be found on the information board in the [Student Area](#).

Post Offices

Die Post

Amthausstrasse 6, 4143 Dornach

Monday to Friday 07:30 - 12:00
13:30 - 18:00
Saturday 08:00 - 12:00
Sunday closed

Die Post

Postplatz 1, 4144 Arlesheim

Monday to Friday 07:30 - 12:00
13:30 - 18:00
Saturday 08:00 - 12:00
Sunday closed

Supermarkets

Migros

Wollmattweg 7, 4143 Dornach

Monday to Friday 07:30 - 18:30
Saturday 08:00 - 17:00
Sunday closed

Coop

Neuarlesheimerstrasse 4/6, 4143 Arlesheim

Monday to Thursday 08:00 - 18:30
Friday 08:00-20:00
Saturday 07:30 - 18:00 | Sunday closed

Migros

Postplatz 7, 4144 Arlesheim

Monday to Friday 08:00 - 19:00
Saturday 08:00 - 18:00
Sunday closed

Denner

Hauptstrasse 4, 4143 Dornach

Monday to Friday 07:00 - 18:30
Saturday 07:00 - 17:00
Sunday 08:00 - 18:00

Banks

UBS

Hauptstrasse 31, 4144 Arlesheim

Monday to Friday 09:00 - 12:00
14:00 - 17:00
Saturday closed
Sunday closed

PostFinance

Amthausstrasse 6, Dornach

Monday to Friday 07:30 - 12:00
13:30 - 18:00
Saturday 08:00 - 12:00
Sunday closed

Raiffeisen

Amthausstrasse 12, 4143 Dornach

Monday to Friday 08:00 - 12:00
14:00 - 17:00
Saturday closed
Sunday closed

Freie Gemeinschaftsbank

Meret Oppenheim-Strasse 10, 4053 Basel

Monday and Friday 09:00-12:00
Tuesday to Thursday 09:00 - 12:00
14:00 - 17:00
Saturday and Sunday closed



Gemeindeverwaltung (Local Authority)

Hauptstrasse 33, 4143 Dornach

Monday 08:30 - 11:30 | 14:00 - 16:00

Tuesday 07:30 - 13:00

Wednesday 14:00 - 16:00

Thursday 14:00 - 18:00

Friday 08:30 - 11:30

More information on Dornach local authority at www.dornach.ch

Regarding residence registration for students, check [page 12](#).

Weil am Rhein (Germany)

Weil am Rhein offers a wider range of services such as shops, supermarkets and museums within a 40-minute train ride. Groceries and services are more affordable in Germany if compared to Switzerland.

For information on visiting Weil am Rhein (Germany)
www.weil-am-rhein.de



For traveling to Weil am Rhein, we recommend purchasing the Triregio Day Pass from the TNW green ticket machines located at the train stations.

Basel

With just a 20-minute train ride from Dornach, you can reach Basel and experience everything that city life has to offer. Explore Basel's vibrant arts scene, marvel at its historic architecture, relax by the Rhine river, and more!

**Watch the clip of our
students enjoying Basel!**
For more information
www.basel.com





Emergency Numbers

In an emergency, you can reach out for help by dialing these numbers.

Ambulance: 144

Police: 117

Fire service: 118

Swiss Confederation: www.ch.ch

Poison Control: 145

Tox Info Suisse - 24/7 information in the event of poisoning or suspected poisoning:
www.toxinfo.ch

European Emergency: 112

European emergency phone number, available everywhere in the EU, free of charge:
www.europa.eu/youreurope/citizens/travel/security-and-emergencies

Crisis Support: 143

Heart2Heart - Counselling Helpline anonymous and free support by phone or chat, available daily from 6 to 11 pm: www.143.ch/en





 studium.goetheanum.ch

 [@goetheanum_studium](https://www.instagram.com/goetheanum_studium)

 studium@goetheanum.ch

Goetheanum
Freie Hochschule für Geisteswissenschaft
Studium und Weiterbildung

Goetheanum
School of Spiritual Science
Studies & Further Education

Rütliweg 45
4143 Dornach, Switzerland